

My Little Angel

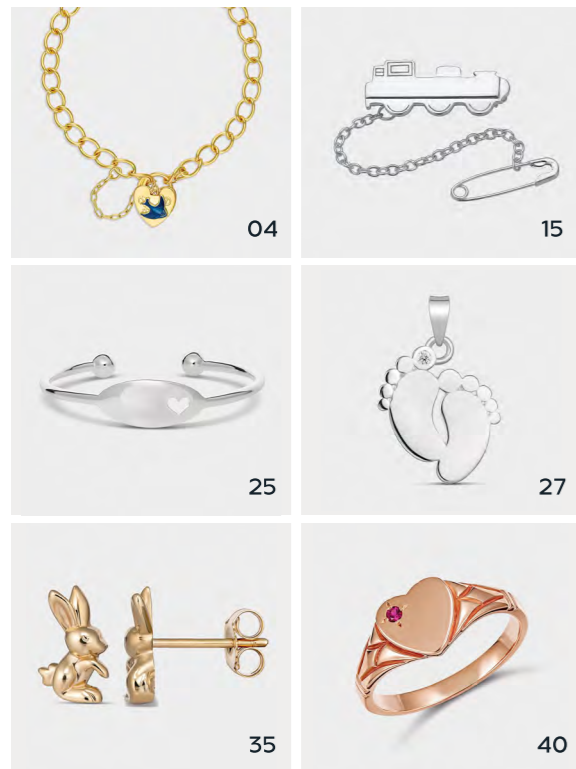
PRODUCT CATALOGUE



BY PATERSON FINE JEWELLERY

BECOME A STOCKIST.
CREATE AN ACCOUNT

VIEW MY LITTLE ANGEL
COLLECTION & ORDER ONLINE



Contents

- 03. About MY LITTLE ANGEL™
- 04. BRACELETS
- 15. BROOCHES
- 25. BANGLES
- 27. PENDANTS
- 35. EARRINGS
- 40. SIGNET RINGS
- 46. Sourcing & Safety
- 47. Product Care & Repair

About MY LITTLE ANGEL™

MY LITTLE ANGEL™ was created in 1996 as a premium jewellery brand for babies and children. With playful designs, safety features and high quality materials, these bespoke pieces will be sure to delight. These precious trinkets also make memorable gifts to mark special milestones.

Our stringent quality-control department ensures that the jewellery is completely safe, so we can commit to the craftsmanship of our jewellery with a 12-month warranty which includes repair and replacement for purchased products with manufacturing defects. MY LITTLE ANGEL™ jewellery is made with nickel free alloys and precious metals sourced from reputable metal suppliers.

Our promise to you, is to provide excellent service and quality jewellery, supported with marketing and point of sale materials so you can stock MY LITTLE ANGEL™ confidently.

Bracelets



BRACELETS Sterling Silver



6706A
Brooklyn Round Curb
Bracelet



6706BDA
Brooklyn Bluebird Round
Curb Bracelet



6706PHA
Brooklyn Round Curb Bracelet with
Rose Gold Heart Charm



6706TPA
Brooklyn Teddy Round
Curb Bracelet



6707A
Brooklyn Round Curb
Bracelet with ID



6707BDA
Brooklyn Bluebird Round Curb
Bracelet with ID



6707TPA
Brooklyn Teddy Round Curb
Bracelet with ID



6715A
Brooklyn Diamond Cut Round Curb
Bracelet



6715BDA
Brooklyn Bluebird Diamond Cut
Round Curb Bracelet

BRACELETS
Sterling Silver



6715TPA

Brooklyn Teddy Diamond Cut Round Curb Bracelet



6715IDA

Brooklyn Diamond Cut Round Curb Bracelet with ID



6715IBA

Brooklyn Bluebird Diamond Cut Round Curb Bracelet with ID



6723IDTPA

Brooklyn Teddy Figaro Bracelet 1+3 with ID



6730A

Brooklyn Belcher Chain Bracelet



6730BDA

Brooklyn Bluebird Belcher Chain Bracelet



6715IDTPA

Brooklyn Teddy Diamond Cut Round Curb Bracelet with ID



6723A

Brooklyn Figaro Bracelet 1+3



6723BDA

Brooklyn Bluebird Figaro Bracelet 1+3



6730IDA

Brooklyn Belcher Chain Bracelet with ID



6730IBA

Brooklyn Bluebird Belcher Chain Bracelet with ID



6730IPHA

Brooklyn Belcher Chain Bracelet with ID and Rose Gold Heart Charm



6723TPA

Brooklyn Teddy Figaro Bracelet 1+3



6723IDA

Brooklyn Figaro Bracelet 1+3 with ID



6723IBA

Brooklyn Bluebird Figaro Bracelet 1+3 with ID



BLC01A

Billy Belcher Bracelet with ID and Cross Charm



BLC08A

Billy Belcher Bracelet with Cutout Heart on ID



BLC09A

Billy Belcher Bracelet with Cutout Cross on ID

BRACELETS
Sterling Silver

BRACELETS
Sterling Silver



BLC11CZA

Bowie Belcher Bracelet with CZ Cross and MLA Charm



BLC12A

Bowie Belcher Bracelet with Footprint Charm



BLC12HTA

Bowie Belcher Bracelet with Footprint and Heart Charm



BLC13BDA

Bowie Belcher Bracelet with MLA Bluebird Heart Charm



BLC14A

Bowie Belcher Bracelet with MLA Pink Heart Charm



Base Metal Yellow Plated



6702H

Brooklyn Curb Bracelet



6702BDH

Brooklyn Bluebird Curb Bracelet



6702TPH

Brooklyn Teddy Curb Bracelet



6705TPH

Brooklyn Teddy Belcher Bracelet



6705IDH

Brooklyn Belcher Bracelet with ID



6705IBH

Brooklyn Bluebird Belcher Bracelet with ID



6702PHH

Brooklyn Curb Bracelet with Rose Plated Heart Charm



6704H

Brooklyn Curb Bracelet with ID



6704BDH

Brooklyn Bluebird Curb Bracelet with ID



6705IDTPH

Brooklyn Teddy Belcher Bracelet with ID



6712H

Brooklyn Figaro Bracelet 1+3



6712BDH

Brooklyn Bluebird Figaro Bracelet 1+3



6704TPH

Brooklyn Teddy Curb Bracelet with ID



6705H

Brooklyn Belcher Bracelet



6705BDH

Brooklyn Bluebird Belcher Bracelet



6712TPH

Brooklyn Teddy Figaro Bracelet 1+3



6712IDH

Brooklyn Figaro Bracelet 1+3 with ID



6712IBH

Brooklyn Bluebird Figaro Bracelet 1+3 with ID

Base Metal Rose Plated



6702PH

Brooklyn Curb Bracelet



6702BDPH

Brooklyn Bluebird Curb Bracelet



6704PH

Brooklyn Curb Bracelet with ID



6704BDPH

Brooklyn Bluebird Curb Bracelet with ID



6705PH

Brooklyn Belcher Bracelet



6705IDPH

Brooklyn Belcher Bracelet with ID



6705IBPH

Brooklyn Bluebird Belcher Bracelet with ID



6712IBPH

Brooklyn Bluebird Figaro Bracelet 2+5 with ID

9kt Yellow Gold



6709-55C

Brooklyn Round Curb Bracelet



6709-BD55C

Brooklyn Bluebird Round Curb with ID Bracelet



6710-55C

Brooklyn Round Curb Bracelet with ID



6710-BD55C

Brooklyn Bluebird Round Curb Bracelet with ID



6710-55DC

Brooklyn Diamond Round Curb Bracelet with ID



Brooches



BROOCHES
Sterling Silver



4001A
Tilly Stadium Childrens Brooch



4001BDA
Tilly Bluebird Stadium Childrens Brooch



4001BLA
Tilly Blue Stone Stadium Childrens Brooch



4004A
Tristan Embossed Childrens Brooch



4004HTA
Tristan Heart Charm Embossed Childrens Brooch



4005A
Tyler Rectangle Childrens Brooch



4001RDA
Tilly Red Stone Stadium Childrens Brooch



4001TYA
Tilly Stadium Childrens Brooch with Teddy Charm



4003A
Thomas Oval Childrens Brooch



4005BDA
Tyler Bluebird Rectangle Childrens Brooch



4008A
Turner Train Stadium Childrens Brooch



4012A
Trinity Cross Oval Brooch



4003BDA
Thomas Bluebird Oval Childrens Brooch



4003BLA
Thomas Blue Stone Oval Childrens Brooch



4003RDA
Thomas Red Stone Oval Childrens Brooch



4013A
Toby Train Brooch

Silver Yellow Plated



4001H

Tilly Stadium Childrens Brooch



4001BDH

Tilly Bluebird Stadium Childrens Brooch



4001BLH

Tilly Blue Stone Stadium Childrens Brooch



4004H

Tristan Embossed Childrens Brooch



4004HTH

Tristan Heart Charm Embossed Childrens Brooch



4005H

Tyler Rectangle Childrens Brooch



4001RDH

Tilly Red Stone Stadium Childrens Brooch



4001TYH

Tilly Stadium Childrens Brooch with Teddy Charm



4003H

Thomas Oval Childrens Brooch



4005BDH

Tyler Bluebird Rectangle Childrens Brooch



4008H

Turner Train Stadium Childrens Brooch



4013H

Toby Train Brooch



4003BDH

Thomas Bluebird Oval Childrens Brooch



4003BLH

Thomas Blue Stone Oval Childrens Brooch



4003RDH

Thomas Red Stone Oval Childrens Brooch

BROOCHES

Silver Rose Plated



4001PH

Tilly Stadium Childrens Brooch



4001BDPH

Tilly Bluebird Stadium Childrens Brooch



4003PH

Thomas Oval Childrens Brooch



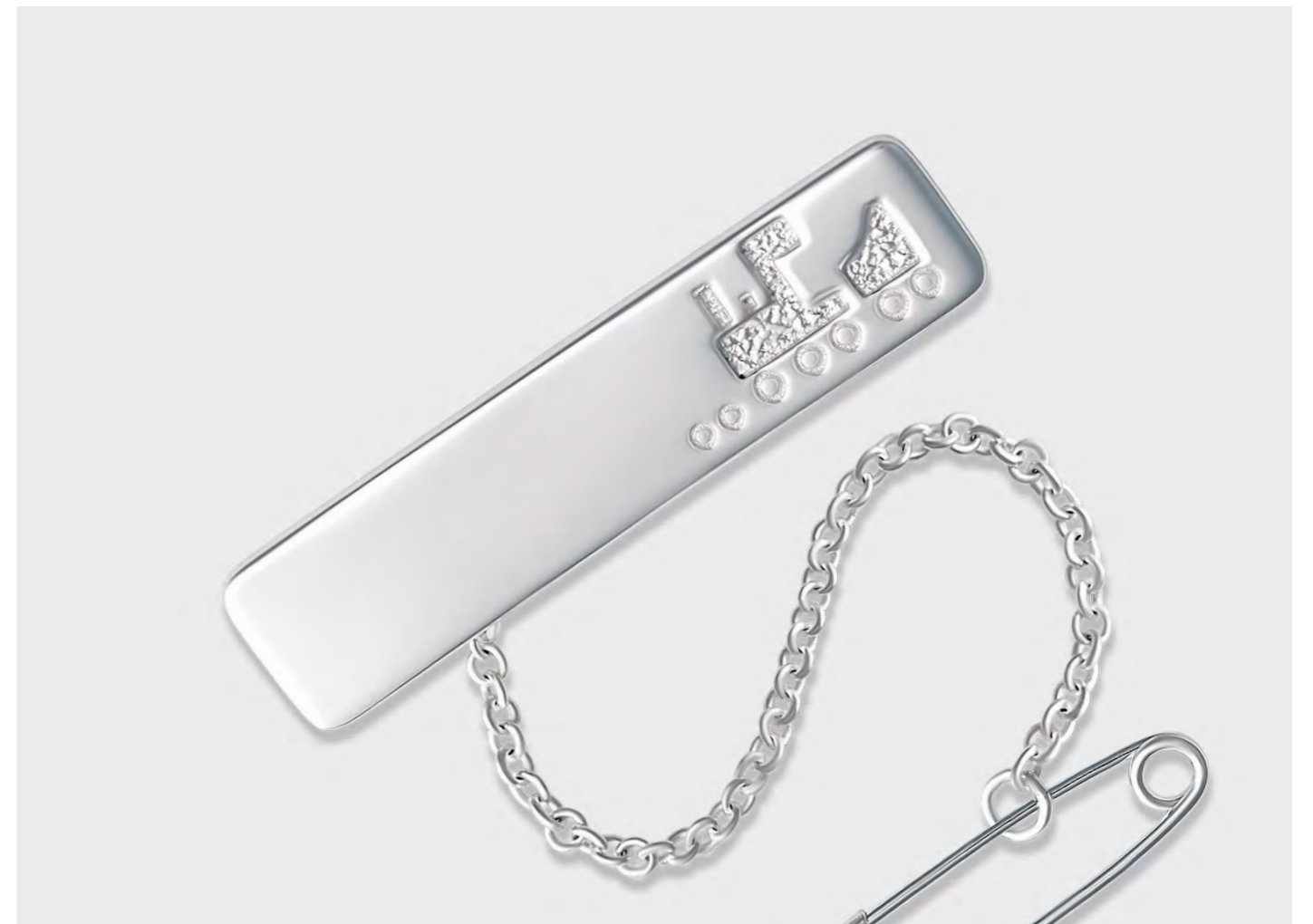
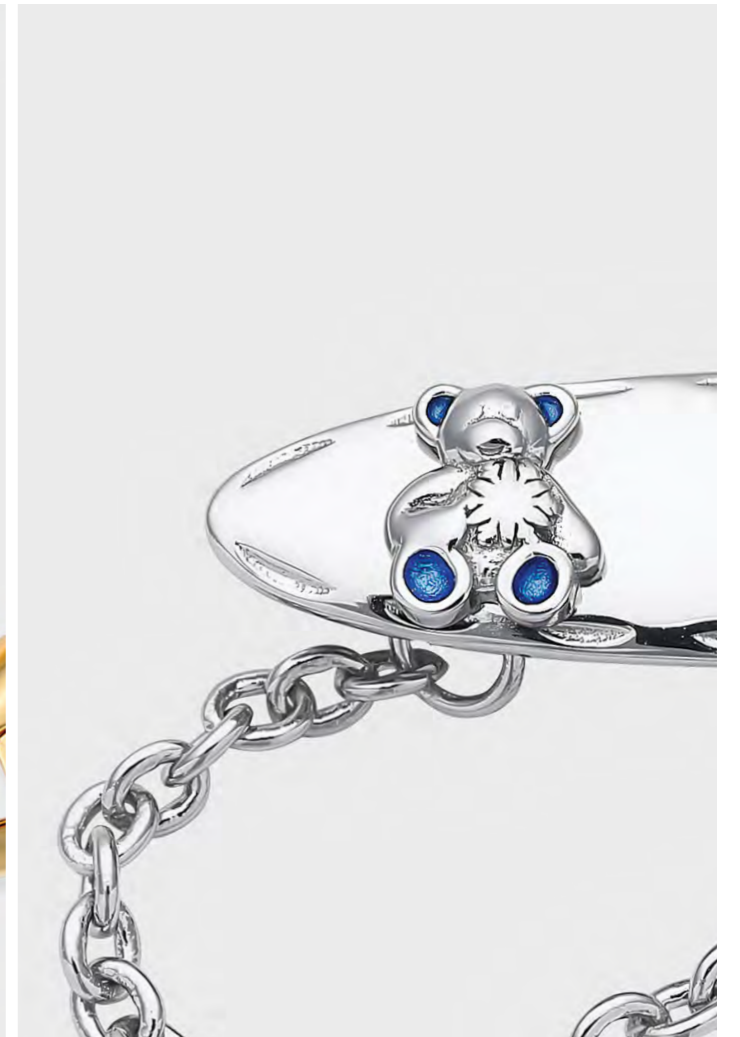
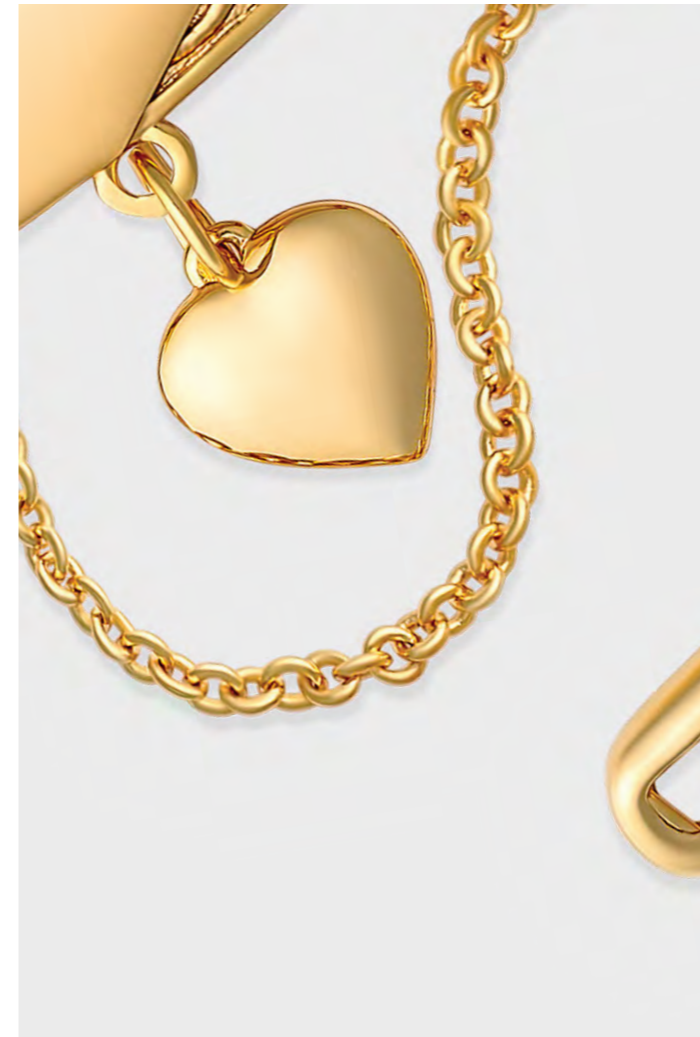
4003BDPH

Thomas Bluebird Oval Childrens Brooch



4004PH

Tristan Embossed Childrens Brooch



BROOCHES
9kt White Gold



4001UD
Tilly Stadium Childrens Brooch



4001UBDD
Tilly Bluebird Stadium Childrens Brooch



4001UDD
Tilly Diamond Stadium Childrens Brooch



4003UD
Thomas Oval Childrens Brooch



4003UBDD
Thomas Bluebird Oval Childrens Brooch



4003UDD
Thomas Diamond Oval Childrens Brooch



4003UTBD
Thomas Teddy Oval Childrens Brooch

BROOCHES
9kt Yellow Gold



4001UC
Tilly Stadium Childrens Brooch



4001UBDC
Tilly Bluebird Stadium Childrens Brooch



4001UDC
Tilly Diamond Stadium Childrens Brooch



4001URDC
Tilly Red Stone Stadium Childrens Brooch



4001UBLC
Tilly Blue Stone Stadium Childrens Brooch



4003UC
Thomas Oval Childrens Brooch 9kt Yellow Gold



4003UBDC
Thomas Bluebird Oval Childrens Brooch



4003UDC
Thomas Diamond Oval Childrens Brooch



4003UTBC
Thomas Teddy Oval Childrens Brooch

BROOCHES

9kt Rose Gold



4001UI

Tilly Stadium Childrens Brooch



4001UBDI

Tilly Bluebird Stadium Childrens Brooch



4001UDI

Tilly Diamond Stadium Childrens Brooch



4003UI

Thomas Oval Childrens Brooch



4003UBDI

Thomas Bluebird Oval Childrens Brooch



4003UDI

Thomas Diamond Oval Childrens Brooch

BECOME A STOCKIST.
CREATE AN ACCOUNT

VIEW MY LITTLE ANGEL
COLLECTION & ORDER ONLINE

Bangles



BANGLES

Sterling Silver



6701P A (sizes 40 - 70mm)
Kendall Golf Bangle



BG113A
Charlie Heart Cuff Bangle 45mm

Base Metal Yellow Plated



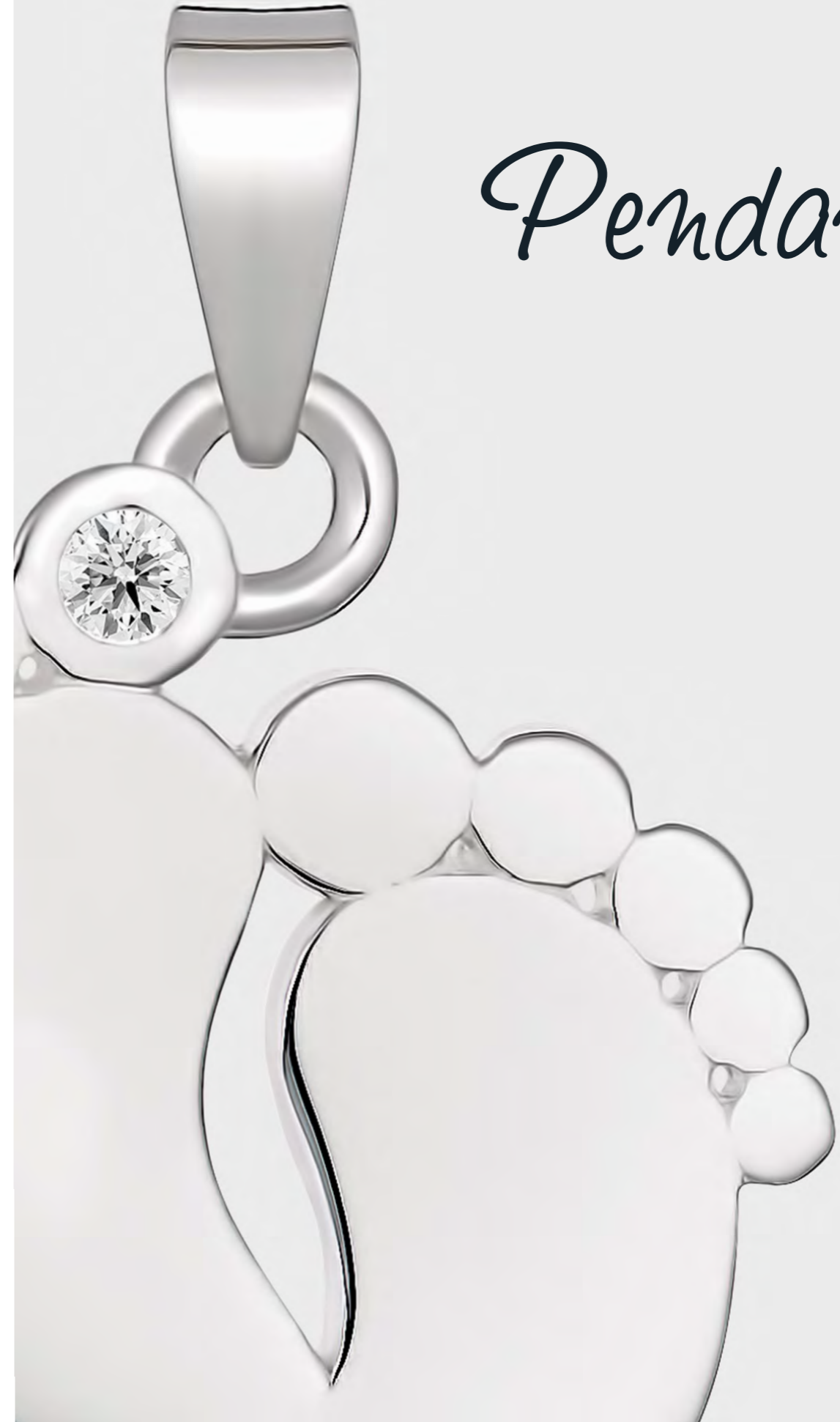
6708 H (sizes 40 - 70mm)
Kaia Golf Bangle

Base Metal Rose Plated



6708 PH (sizes 40 - 70mm)
Kaia Golf Bangle

Pendants



PENDANTS
Sterling Silver



1011BDA
Parker Bluebird Puffed
Heart Pendant



1012BDA
Presley Bluebird Heart Pendant



1015BDA
Bluebird Pendant



3007BDA
Preston Bluebird Heart Locket



3001BDA
Prague Bluebird Locket

PENDANTS
Sterling Silver



1017BDA
Penny Bluebird Heart Pendant



1018BDA
Paxton Bluebird Double
Heart Pendant



1019BDA
Paxton Bluebird Heart Pendant



1011BDH
Parker Bluebird Puffed
Heart Pendant



1012BDH
Presley Bluebird Heart Pendant
Also available in Silver Rose Plated



3007BDH
Preston Bluebird Heart Locket

PENDANTS
Silver Yellow Plated



1020BDA
Phoebe Bluebird Sun Pendant



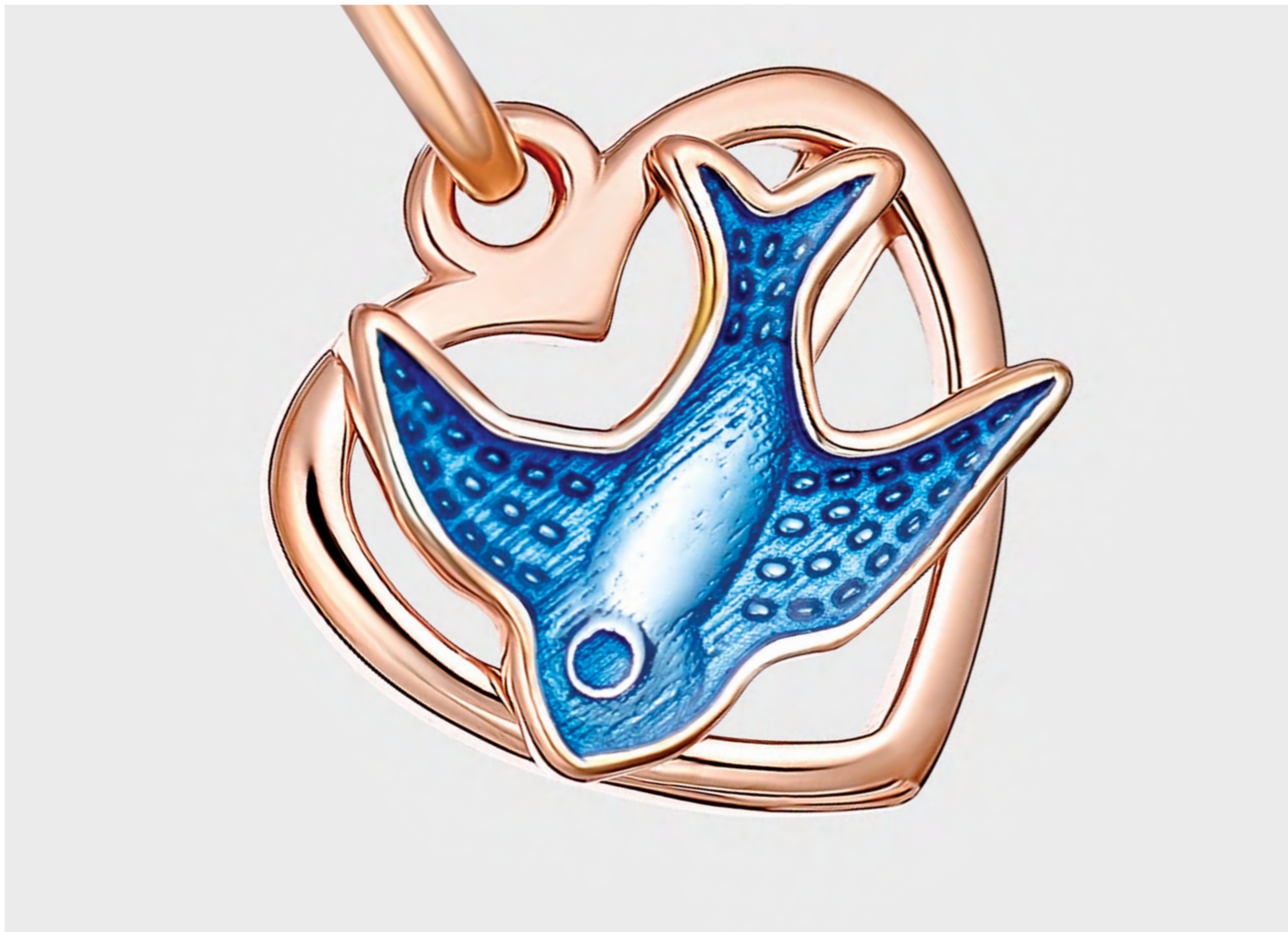
1022BDA
Peace Bluebird Cross Pendant



P1064-CZA
Baby Feet CZ Pendant



3001BDH
Prague Bluebird Locket



PENDANTS
9kt Yellow Gold



1005PC
Paige Puffed Heart Pendant



1005DC
Paige Puffed Heart Diamond Pendant



1005RDC
Paige Puffed Heart Red Stone Pendant



1011PC
Parker Puffed Heart Pendant



1011DC
Parker Puffed Heart Diamond Pendant



1011BDC
Parker Bluebird Puffed Heart Pendant



1012BDC
Presley Bluebird Heart Pendant



1015BDC
Bluebird Pendant



3007BDC
Preston Bluebird Heart Locket

PENDANTS
9kt Yellow Gold



3001BDC
Prague Bluebird Locket



5101EC
Pierre Engraved Cross Pendant



5101EDC
Pierre Engraved Diamond Cross Pendant



1015BDI
Bluebird Pendant



5103EC
Petra Engraved Diamond Cross Pendant



5103EDC
Petra Engraved Diamond Cross Pendant



5105EC
Pam Engraved Cross Pendant



5105EDC
Pam Engraved Diamond Cross Pendant



5136C
Prue Small Cross Pendant

PENDANTS
9kt Rose Gold



1005PI
Paige Puffed Heart Pendant



1005RDI
Paige Puffed Heart Red Stone Pendant



1005DI
Paige Puffed Heart Diamond Pendant



EARRINGS

Sterling Silver



7205BDA

Amy Bluebird Heart Drop Earring



7206BDA

Amelia Bluebird Stud Earring



SLE001 A (sizes 8 - 12mm)

Danni Sleeper Earring
Silver Rhodium Plated

EARRINGS

9kt Rose Gold



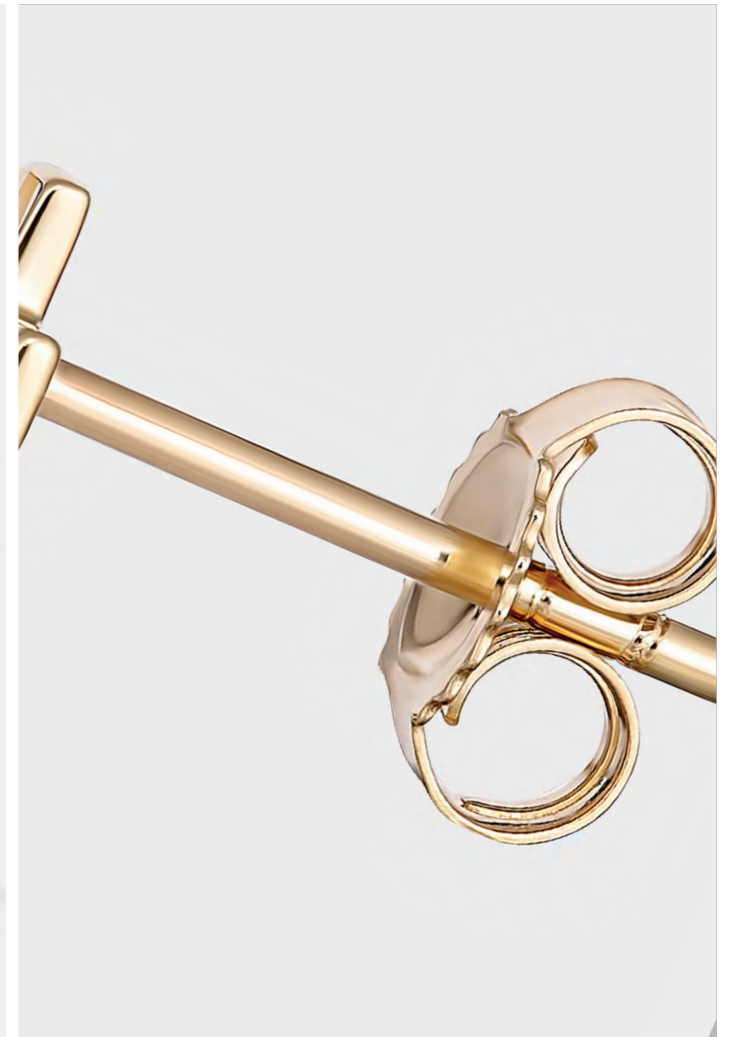
7206BDI

Amelia Bluebird Stud Earring



7205BDI

Amy Bluebird Heart Drop Earring



EARRINGS
9kt Yellow Gold



7205BDC
Amy Bluebird Heart Drop Earring



7206BDC
Amelia Bluebird Stud Earring



PGE031-C
Cross Stud Earring



PGE039-C
Bear Stud Earring



PGE040-C
Dolphin Stud Earring



7226EDC
Petra Engraved Diamond Cross Hook Earring



PGE032-C
Treble Clef Stud Earring



PGE034-C
Cat Stud Earring



PGE035-C
Butterfly Stud Earring



7226EC
Petra Engraved Cross Hook Earring



7227EDC
Pierre Engraved Diamond Cross Hook Earring



7227EC
Pierre Engraved Cross Hook Earring



PGE036-C
Duck Stud Earring



PGE037-C
Dog Stud Earring



PGE038-C
Rabbit Stud Earring



SLE001 C (sizes 8 - 22mm)
Danni Sleeper Earring

Signet rings



SIGNET RINGS Sterling Silver



8180EA
Emily Engraved Heart Signet Ring



8180RDA
Emily Heart Red Stone Signet Ring



8180BLA
Emily Heart Blue Stone Signet Ring



8180BDA
Emily Bluebird Heart Signet Ring



8183EA
Eleanor Engraved Double Heart Signet Ring



8183RDA
Eleanor Double Heart Red Stone Signet Ring



8183BLA
Eleanor Double Heart Blue Stone Signet Ring



SIGNET RINGS
9kt Yellow Gold



8180EC
Emily Engraved Heart Signet Ring



8180RDC
Emily Heart Red Stone Signet Ring



8180BLC
Emily Heart Blue Stone Signet Ring



8180BDC
Emily Bluebird Heart Signet Ring



8180DC
Emily Heart Diamond Signet Ring



8183EC
Eleanor Engraved Double Heart Signet Ring



8183RDC
Eleanor Double Heart Red Stone Signet Ring



8183BLC
Eleanor Double Heart Blue Stone Signet Ring



8183DC
Eleanor Double Heart Diamond Signet Ring

SIGNET RINGS

9kt Rose Gold



8180EI

Emily Engraved Heart Signet Ring



8180RDI

Emily Heart Red Stone Signet Ring



8180BDI

Emily Bluebird Heart Signet Ring



8180DI

Emily Heart Diamond Signet Ring



8183EI

Eleanor Engraved Double Heart Signet Ring



8183RDI

Eleanor Double Heart Red Stone Signet Ring



8183DI

Eleanor Double Heart Diamond Signet Ring



Sourcing & Safety

Nickel-free Alloys

All Base Metals or Alloys used in MY LITTLE ANGEL™ products are nickel-free. We adhere to the EU Nickel Directive which regulates the usage of nickel in alloys.

The Nickel Directive (and subsequently incorporated into the REACH* guidelines) is a European Union directive regulating the use of nickel in jewellery and other consumer products designed to come into direct and prolonged skin contact.

Additionally, our enamelling and plating process for ALL our jewellery including children's jewellery adheres to the Californian Metal-Containing Jewellery Law.

The Metal-Containing Jewellery Law is designed to protect children and adults from exposure to lead and cadmium in jewellery. The law restricts the amount of lead in jewellery by identifying what materials may be used and setting lead concentration thresholds that may not be exceeded. The law also restricts the amount of cadmium allowed in children's jewellery.

Although these are American and EU legislations, reputable jewellery manufacturers around the globe have adopted these guidelines to ensure the health and safety of consumers.

*REACH is a regulation of the European Union, adopted to improve the protection of human health and the environment from the risks that can be posed by chemicals, while enhancing the competitiveness of the EU chemicals industry. It also promotes alternative methods for the hazard assessment of substances in order to reduce the number of tests on animals.

Product Care & Repair

CAUTION: Please ensure infants and young children are supervised when wearing jewellery as small parts can pose a serious choking hazard

STONE SET JEWELLERY

Clean jewellery as per instructions below for a specified metal. Avoid using chemicals and abrasive tools to clean stone-set pieces and exposure to harsh substances, as they can affect the appearance of the stone and damage the surface of your jewellery.

SILVER AND ENAMELLED JEWELLERY

With prolonged wear your Silver jewellery can appear dull. Keep them in top condition and ensure that you clean it periodically by following these easy steps.

Cleaning

1. Soak your jewellery in a solution of baking soda and warm water for 5-10 minutes to loosen grime.
2. Gently scrub with a soft-bristle toothbrush to remove any dirt. Stone set pieces should be especially cleaned with care.
3. Rinse the pieces thoroughly in clean water and pat dry with a soft towel.
4. To restore shine, gently rub with a jewellery polishing cloth. These cloths are available to buy at your local supermarket. Cleaning and polishing results may vary with increased wear.

Care

1. Avoid any chemicals and harsh cleaning agents as they will damage the surface of your jewellery.
2. Silver is a soft metal. It is best to take jewellery off during rigorous activities to avoid damage.
3. Enamels can chip like glass and should be handled carefully to avoid breakage.
4. Store your jewellery in a pouch or box that is softly lined to prevent it from scratching – this ensures that your jewellery stays shinier for longer.
5. Make sure your jewellery is dry when you store them, as moisture can damage springs and clasps over time, which is also not covered by your warranty.

PLATED JEWELLERY

Most of our plated jewellery has Silver, Brass or Stainless Steel and covered with pure hard 9kt Yellow/White/Rose Gold or Rhodium to give our pieces a beautiful shine. Please note the longevity of this Gold or Rhodium appearance depends largely on how well you take care of the jewellery. Prolong the colour and condition of your pieces by following these easy steps.

Cleaning (for both Sterling Silver and Brass bases)

1. Lightly dampen a soft towel and brush over the surface of your jewellery. Wet a small soft-bristle toothbrush to clean the finer details of your jewellery.
2. Dry with a soft, snag-free cloth.

NOTE: Please DO NOT use a jewellery polishing cloth, as this wears away the plating sooner. Excessive use of a polishing cloth can also wear away the finer details of your jewellery, so please use sparingly. For plated jewellery, use only a damp towel.

Care

1. Keep plated jewellery away from hard surfaces. Bumps and scratches will cause the plated layer to wear away faster and cause uneven colouring – big scratches can often be irreparable. Store your plated jewellery in a soft fabric lined box and away from abrasive objects to ensure longer lasting shine.
2. Avoid harsh chemicals, as this may cause uneven discolouration over your jewellery.
3. If your plated jewellery is beginning to lose its lustre, take your piece to your local jeweller and ask about re-plating fees.

SOLID GOLD & PLATINUM JEWELLERY

We use Platinum, 9kt or 18kt Gold for our solid precious metal jewellery. While these pieces won't wear in colour and are more durable than plated jewellery, it still requires care due to the delicate details or engraving. With prolonged wear your Gold or Platinum jewellery can lose its initial shine. Treat your pieces with care and keep them in top condition by cleaning it periodically by following these easy steps.

Cleaning

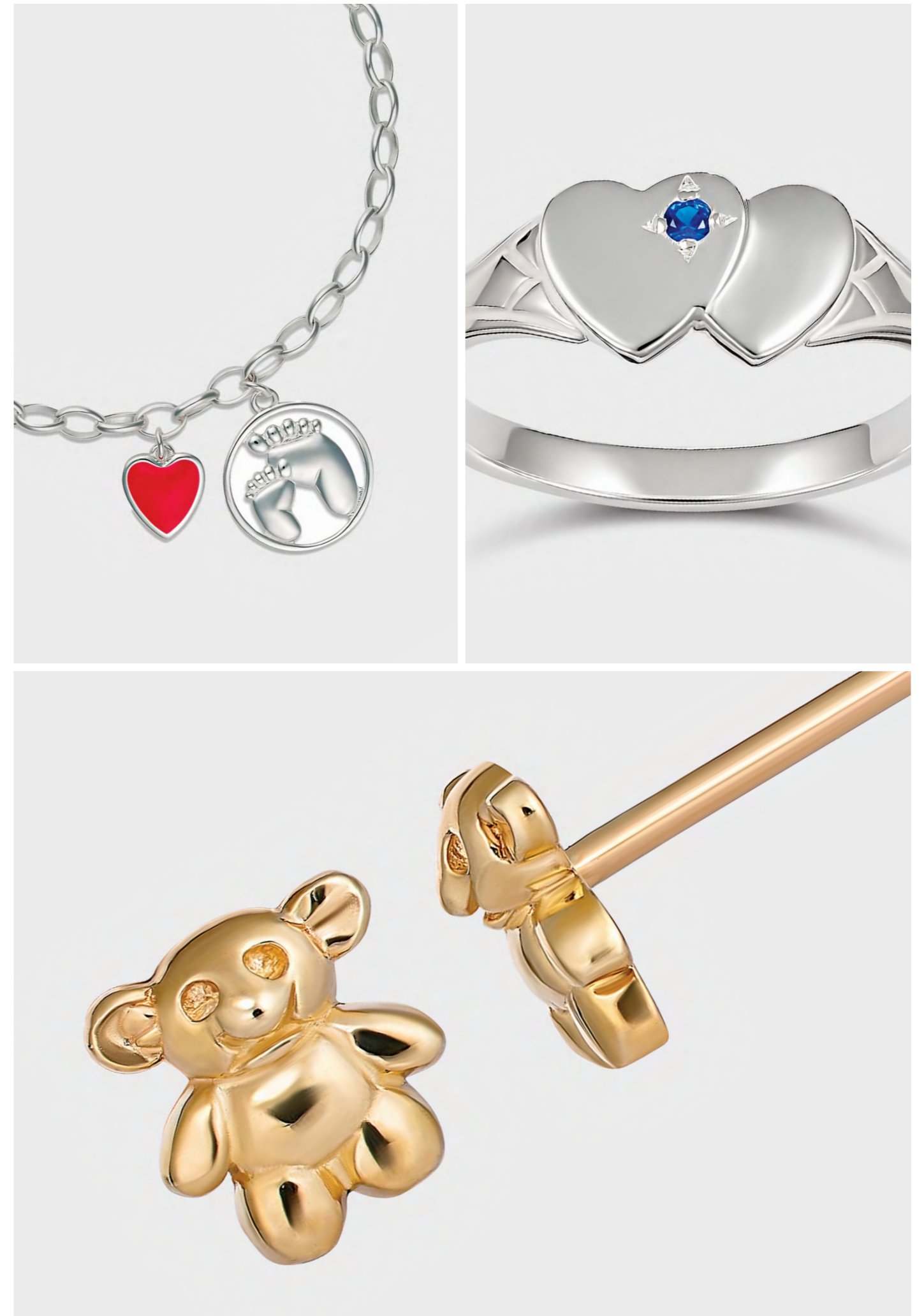
1. Soak your jewellery in a solution of baking soda and warm water for 5-10 minutes to loosen grime. Dishwashing detergent or generic soap is also fine.
2. Gently scrub with a soft-bristle toothbrush to remove any dirt. Stone set pieces should be especially cleaned with care.
3. Rinse the pieces thoroughly in clean water and pat dry with a soft towel.
4. To restore shine, gently rub with a jewellery polishing cloth. These cloths are available to buy at your local supermarket. Cleaning and polishing results may vary with increased wear.

Care

1. Gold or Platinum, while more durable than plated jewellery, are still soft metals. It is best to take jewellery off during rigorous activities to avoid damage.
2. Avoid any chemicals and harsh cleaning agents as they will damage the surface of your jewellery.
3. Store your jewellery in a pouch or box that is softly lined to prevent it from scratching – this ensures that your jewellery stays shinier for longer.
4. Make sure your jewellery is dry when you store them, as moisture can damage springs and clasps over time, which is also not covered by your warranty.

BECOME A STOCKIST.
CREATE AN ACCOUNT

VIEW MY LITTLE ANGEL
COLLECTION & ORDER ONLINE



PO Box 244
Moorabbin, Victoria 3189
Australia

Phone: +61 (3) 9555 9344
Email: sales@pfj.com.au
Website: www.pfj.com.au

ABN: 65 006 766 856